

Point check card

DJ10

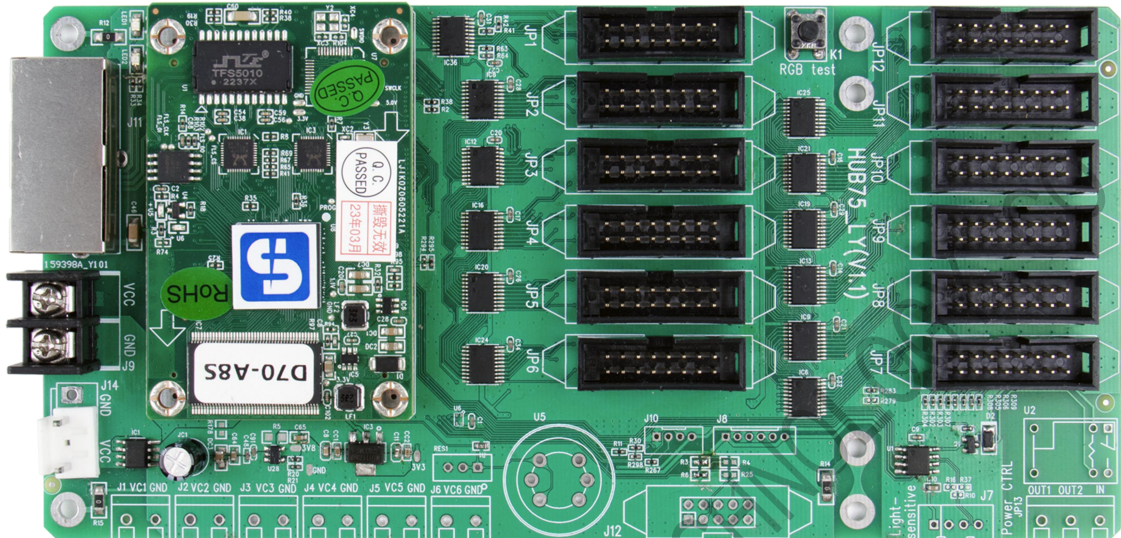
Specification

Update Record

No.	Version Number	Update	Revised Date
1	Ver.1.0	Initial	2023.06.29
2	Ver.1.1	Update content	2024.08.21

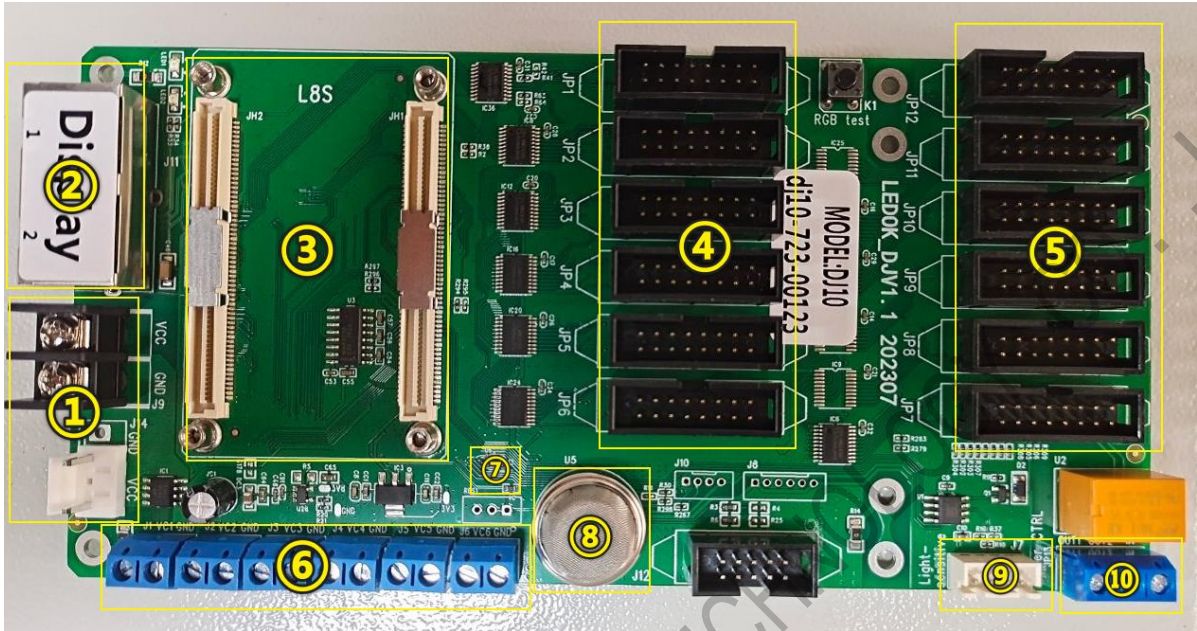
Note: The document content is subject to modification without prior notice.

Product Picture



Receiver D70-A8S PRO D connect with spot inspector card DJ10

Interface Definition



	type	description
input interface	①power port	+5V power supply
	②Display Ethernet	Ethernet port for input
	③receiver	D70-A8S Pro D
	⑤HUB75	6 lines HUB75 signal readback input
	⑥voltage detection	6 lines +5V power voltage detection
	⑦ temperature/humidity detection	temperature and humidity detection
	⑧smoke detection	smoke detection
output interface	⑨brightness detection	brightness detection through 485
	④HUB75	6 lines HUB75 signal output
	⑩power switch control	control two lines power switch in the same time

power indicator	red light solid on	Normal
run indicator	red light flashing slowly	Normal run up

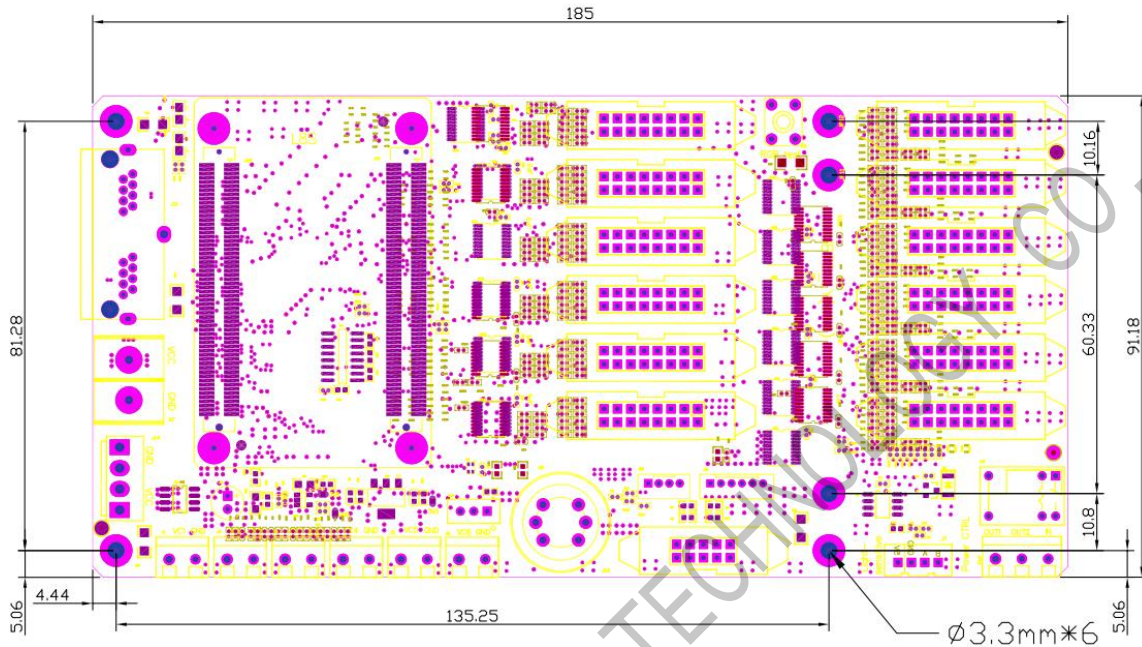
SHENZHEN SYSOLUTION TECHNOLOGY CO., LTD

Working Condition

operational parameter	
working voltage (V)	5.0V
working current (A)	0.9A Max: 3A
Maximum work power consumption (W)	15
working temperature (°C)	- 40°C ~ +95°C
Storage temperature (°C)	-40°C ~75°C, recommend 5°C ~35°C
Humidity of working environment(%)	10% ~ 90%, No condensation

1. recommend to use separate 5V3A power for the led controller.
2. Excessive working temperature can cause a sharp decrease in power efficiency. If the control card and module share the same power supply, please ensure that the control card has a stable voltage and a reasonable actual current supply.

Dimensional Drawing



Unit: mm