



# RC300 Series Power

## Specification

# Update

---

No.	Version	Update	Revise
1	Ver.1.0	Initial	2020.07.01
2	Ver.1.1	Pictures updated	2021.11.02

Note: This document is subject to change without prior notice.

Shanghai Xixun Electronics Co., Ltd.

# Picture Appearance

---



Shanghai Xixun Electronics Co., Ltd

# Features

---

- a. Cryogenic start.
- b. High reliability : 100% full load aging test.
- c. Green LED light- Power supply indication status.
- d. Suitable for taxi-screen application.
- e. Built-in DC fan forced air cooling.

Shanghai Xixun Electronics Co., Ltd

# Parameter

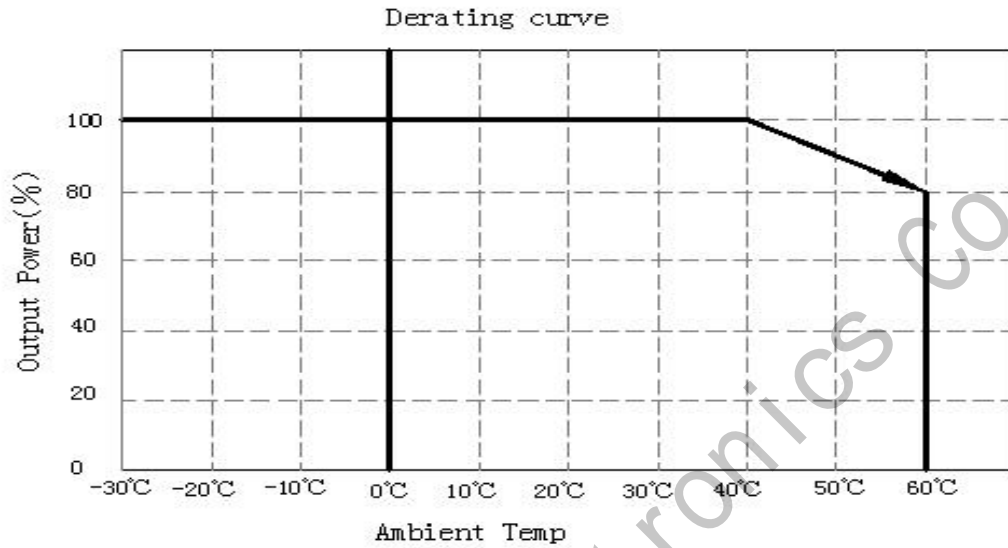
Power Model		RC300D4.2	RC300D4.5	RC300D5
Project	Function	Parameter		
<b>Input Characteristics</b>	Input voltage range	9 ~ 36Vdc	Typical values 12V 24V	
	Power frequency range	100 ~ 120KHz		
	Maxi input current	35A MAX		
	Full load efficiency	≥87%	≥88%	≥89%
	Input impulse current (cold boot)	Less than 100A, cold start		
<b>Output Characteristics</b>	Output voltage	4.2V	4.5V	5.0V
	Output voltage error	±3%	±3%	±3%
		4.07V ~ 4.33V	4.35V ~ 4.65V	4.85V ~ 5.15V

	range			
	Output current	0 ~ 60A	0 ~ 60A	0 ~ 60A
	Maxi power	250W	270W	300W
	Ripple and noise	200mVp-p MAX	200mVp-p MAX	200mVp-p MAX
	Power adjustment range	±1%		
	Load regulation	±2%		
	Output climb time	0.1 ~ 100mS/12Vdc @ full load		
	Output holding time	≥10mS/12Vdc @ 80% of full load		
<b>Protective Properties</b>	Out put over-current protection	Output power 110%~160% protection. Mode : burp mode, automatic recovery after removal of abnormal load conditions		
	Output short circuit protection	Protected mode :burp mode, automatically restored after short circuit condition is removed		
	Output	If the output voltage exceeds the rated		

	over-voltage protection	voltage >2%, the power supply will automatically lock
	Input back connect protection	The input anode and cathode are connected to the reverse power supply
	Over temperature protection	The power supply exceeds the rated power and the overtemperature protection starts
<b>Output Signal</b>	Output instruction	Led Power indication

Shanghai Xixun Electronics Co., Ltd

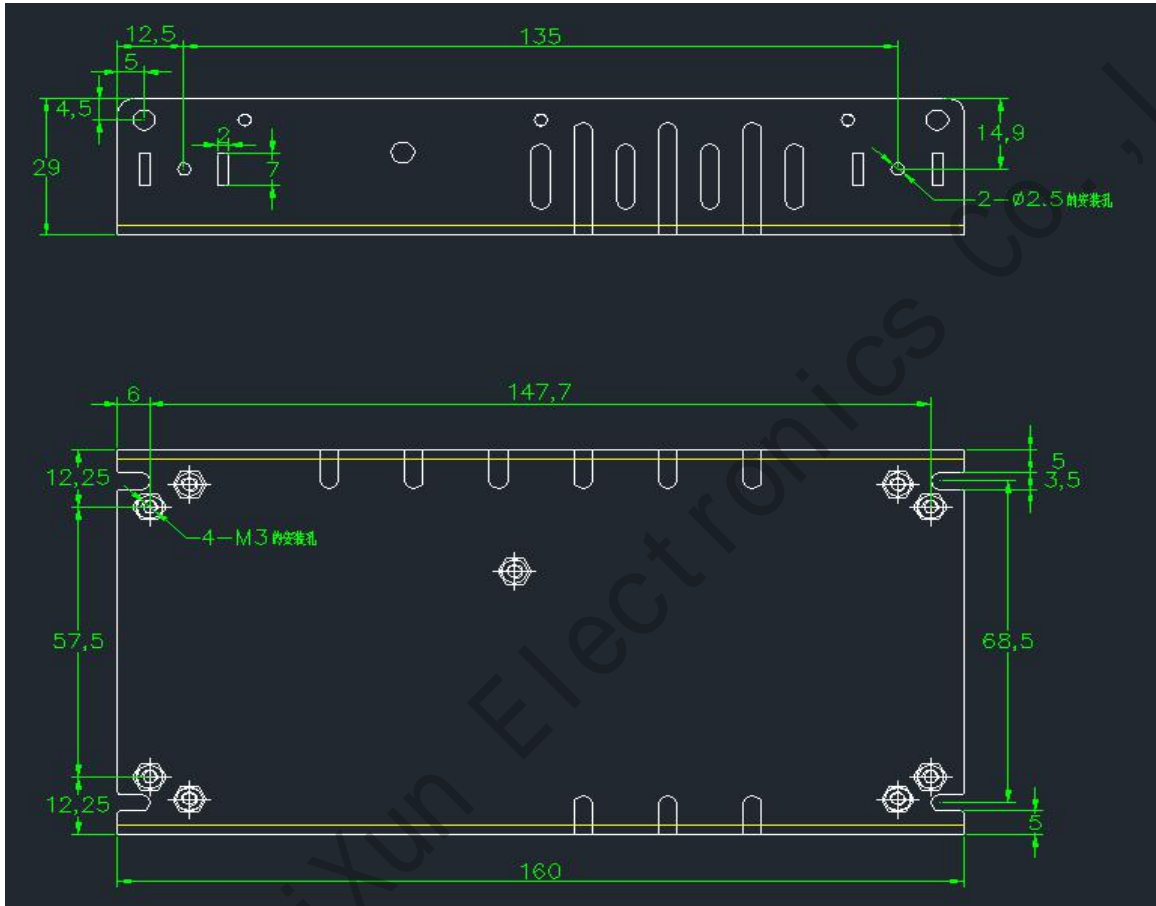
# Working Condition



Work parameter	
Cooling mode	Natural cooling
Working humidity requirement	20 ~ 90% non-condensing
Request of store temperature and humidity	-30 ~ 85°C, 10 ~ 95%RH
Vibration specification	10 ~ 500Hz, 5G 10min./cycle, 60min. each along X, Y, Z axis



# Dimension



Unit: mm


# Packing Way

---

Bubble bag + Cartons (40 Units/Each box)

## Notes

---

- a. The following is the bottom view, the fixing screw is M3, the part of the power supply should be less than 3.5mm, otherwise the power supply may be damaged or cause danger 
- b. The power supply shall be installed directly in the metal box of the system for good heat dissipation. Under poor heat dissipation conditions, it is recommended to use a load of less than 80%.